



INTRODUCING **UTILITY SCAN**

GROUND PENETRATING RADAR

Using the latest in Ground Penetrating Radar Technology we can quickly, safely and effectively locate and map underground utilities and obstructions before you dig.

We can locate gas, water, electric and other existing or abandoned utilities (metal or plastic). Depending on ground conditions, we can locate to a depth of 15 feet. We can also pinpoint water leaks in pipes and voids in the ground.

GPR systems are perfectly safe and can be used in all locations, near sensitive equipment and around people.

Subsurface Radar Solutions is a group of highly trained professionals focused on providing our customers with the most precise subsurface locating possible. Through our use of Ground Penetrating Radar, we are able to quickly, accurately, and safely locate obstructions which can directly affect your bottom line.

Subsurface Radar Solutions, LLC

304 East Woodlawn Road
New Lenox, IL 60451

Illinois Office: 815-485-1621
Wisconsin Office: 414-406-7465

marvin@4srs.com
www.4srs.com

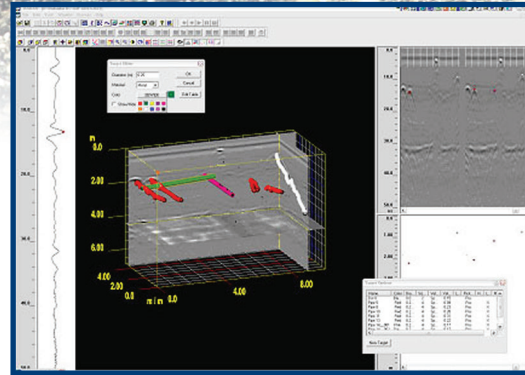
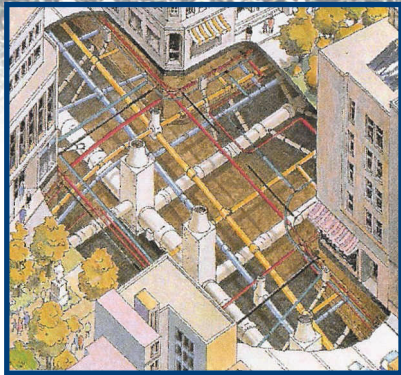


UTILITY SCAN

WHAT
ARE
YOU
LOOKING
FOR?

Would you like to know what is in the ground and how deep it is before you dig?

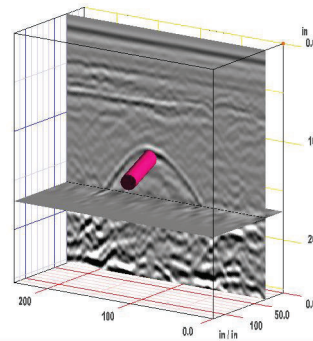
KNOW BEFORE YOU DIG



With the ever growing number and complexity of underground utilities and the rising cost of repairing hits, it is important for you to know precisely where things are located before you start to dig.

Using only the very best, most advanced GPR technology, we are able to give you precise location of underground utilities and obstructions, giving you peace of mind before you dig.

With our advanced 3-D imaging software we can give you a map of the site, letting you know where everything is before you start.



Our Utility Scan Services are Utilized by:

- Contractors
- Engineering Firms
- Excavators
- Electricians
- Public Works Departments

Additional Services Provided by SRS:

Environmental Assessments, Obstruction Locating and Mapping in Concrete, Forensics for Law Enforcement, Architectural Facade Inspection, Highway Inspection, Archaeology.